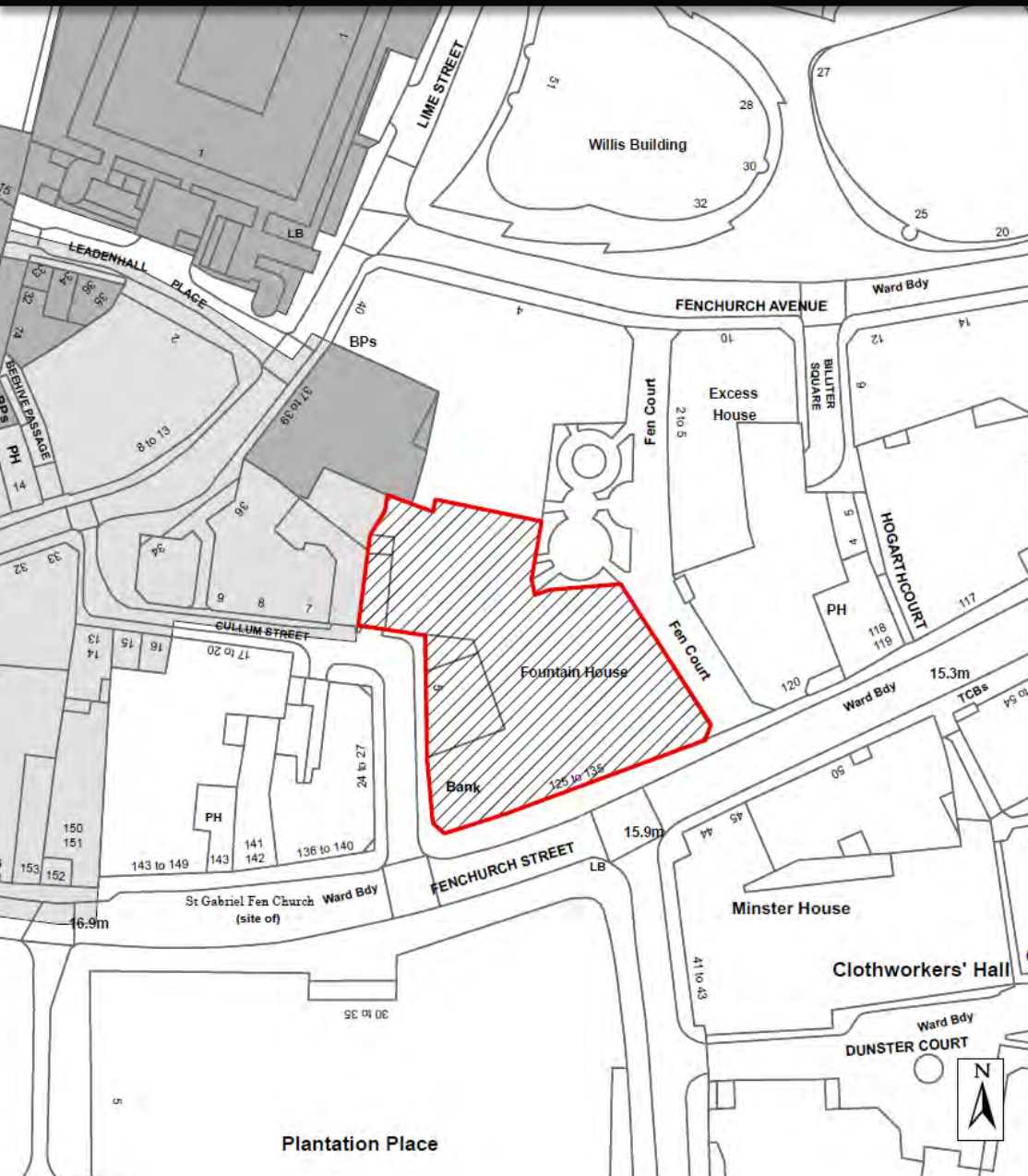


# Planning & Transportation Committee

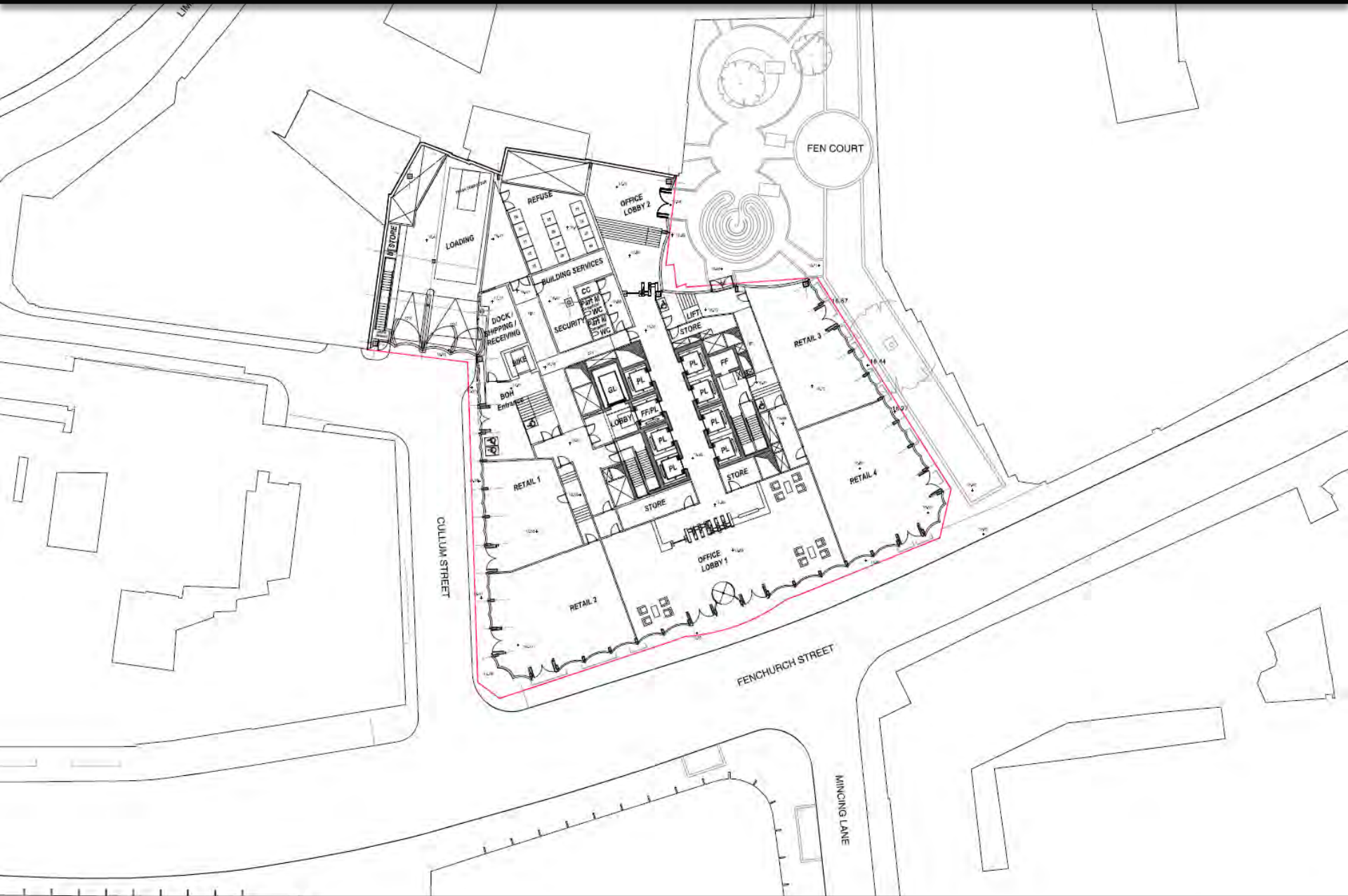
24<sup>th</sup> February 2015

# 130 Fenchurch Street – Fountain House



Site location plan

# 130 Fenchurch Street – Fountain House



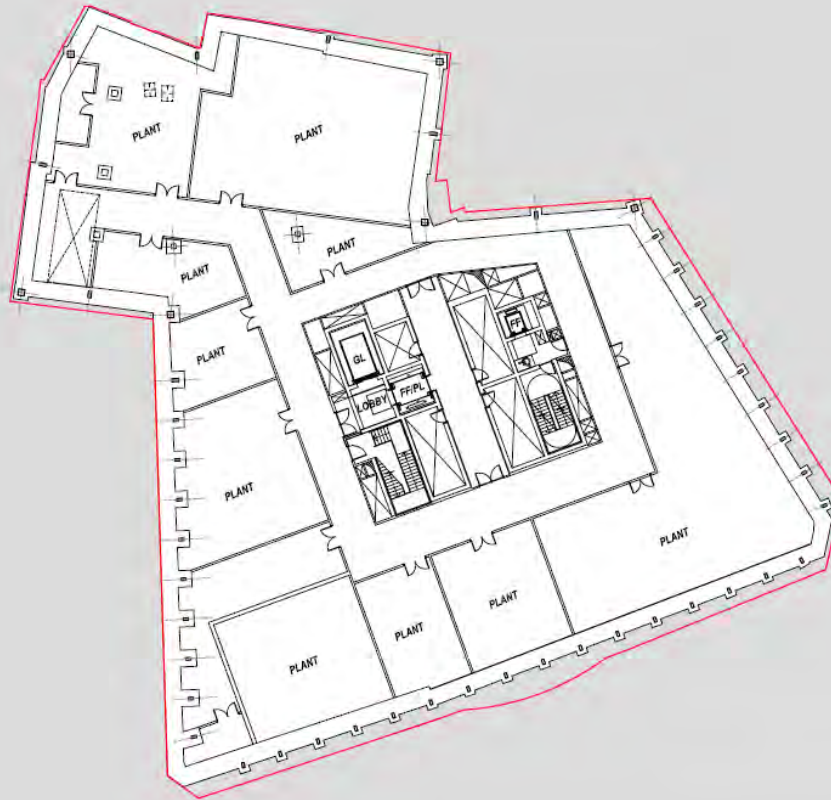
Proposed ground floor plan

# 130 Fenchurch Street – Fountain House



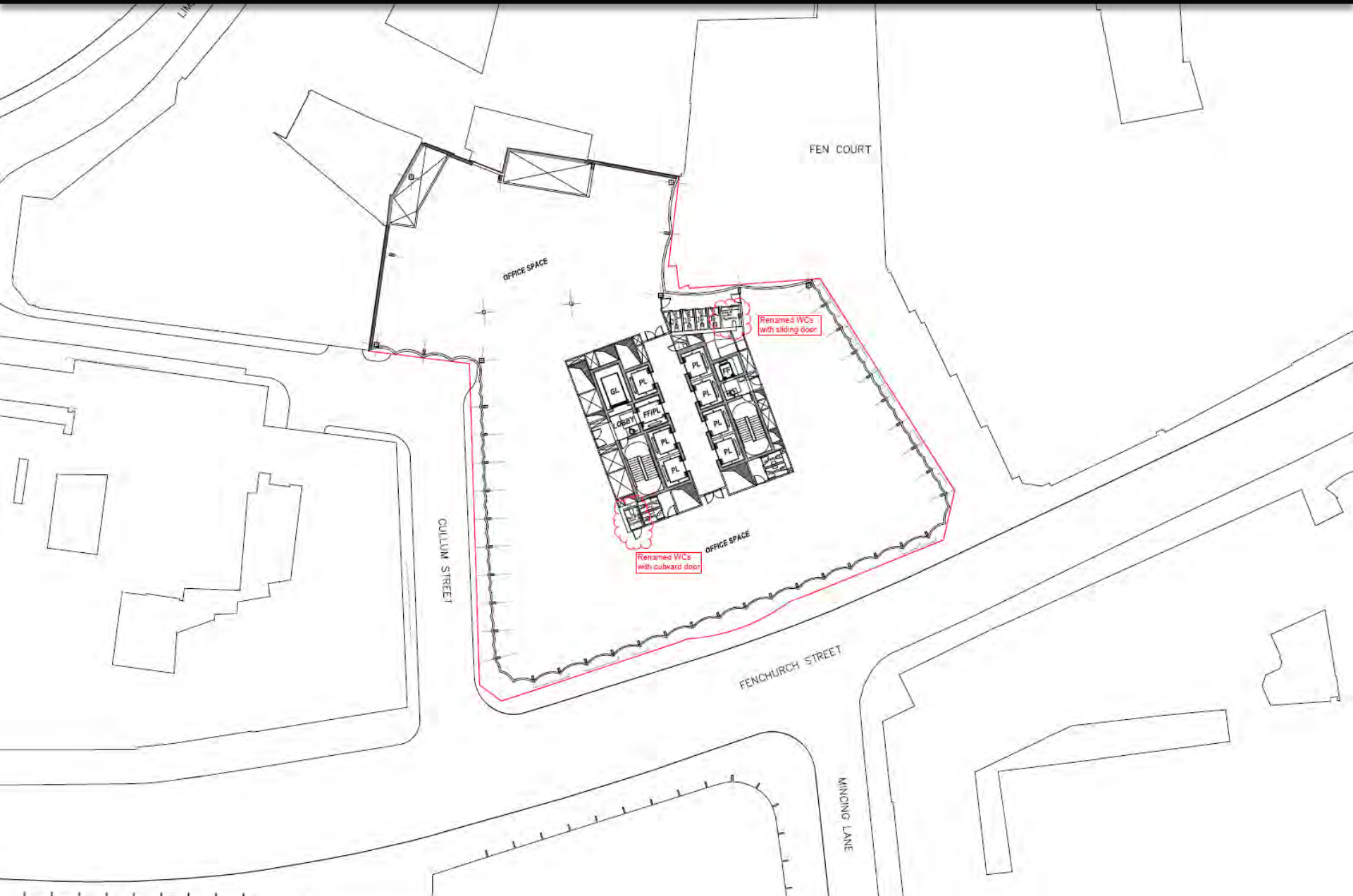
Proposed basement level I plan

# 130 Fenchurch Street – Fountain House



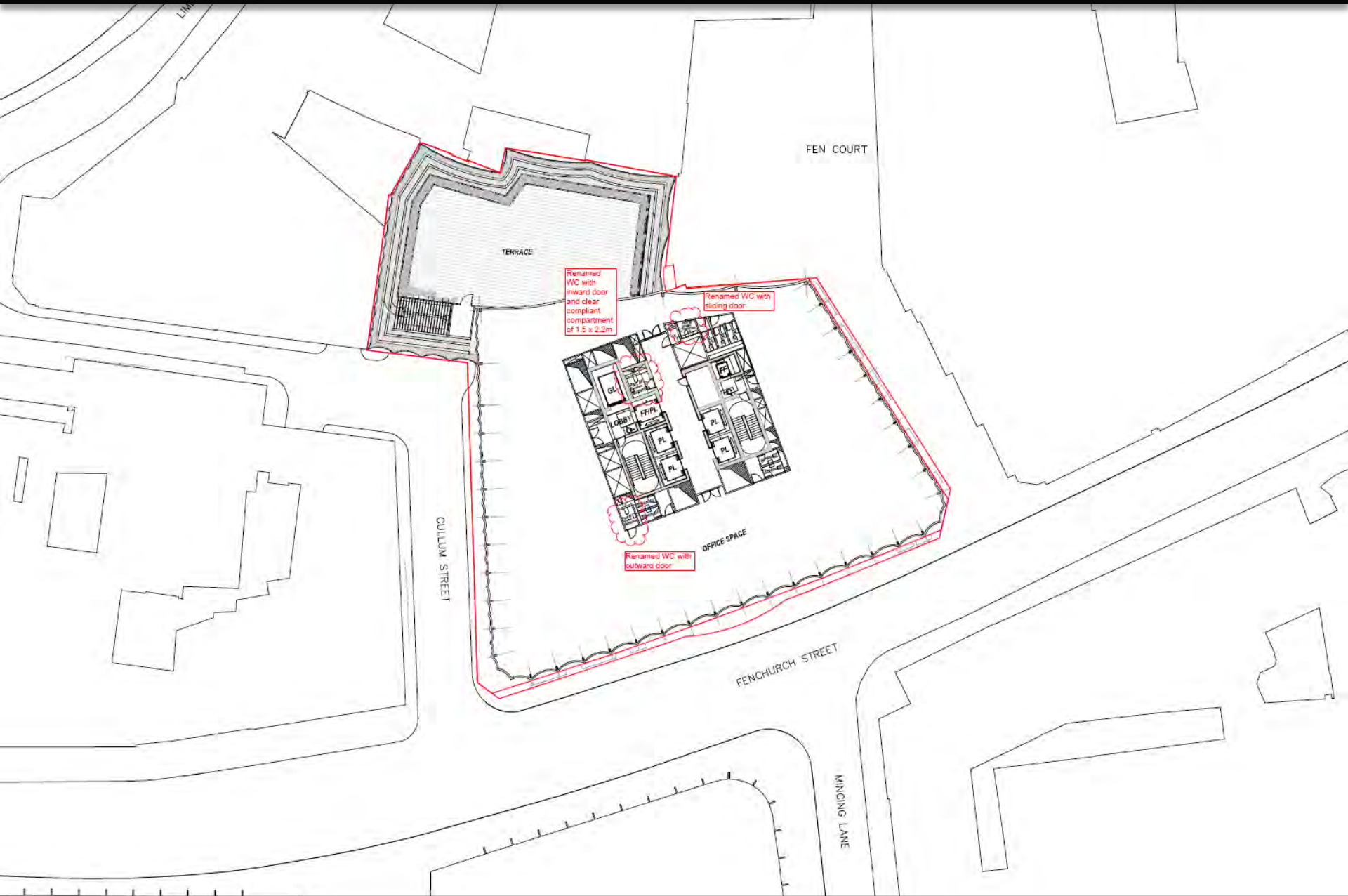
Proposed basement level 2 plan

# 130 Fenchurch Street – Fountain House



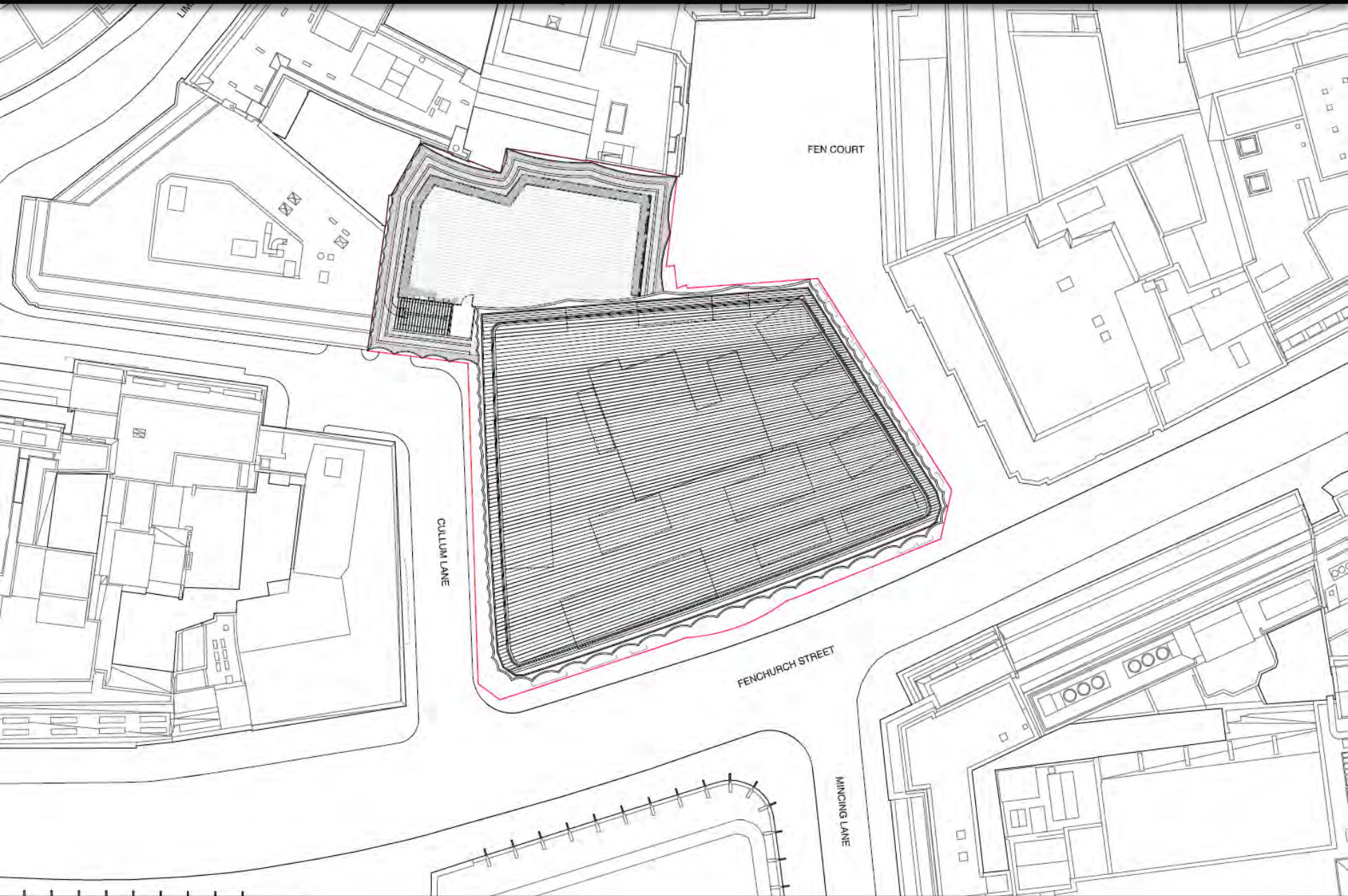
Proposed first (typical) floor plan

# 130 Fenchurch Street – Fountain House



Proposed fifteenth floor plan

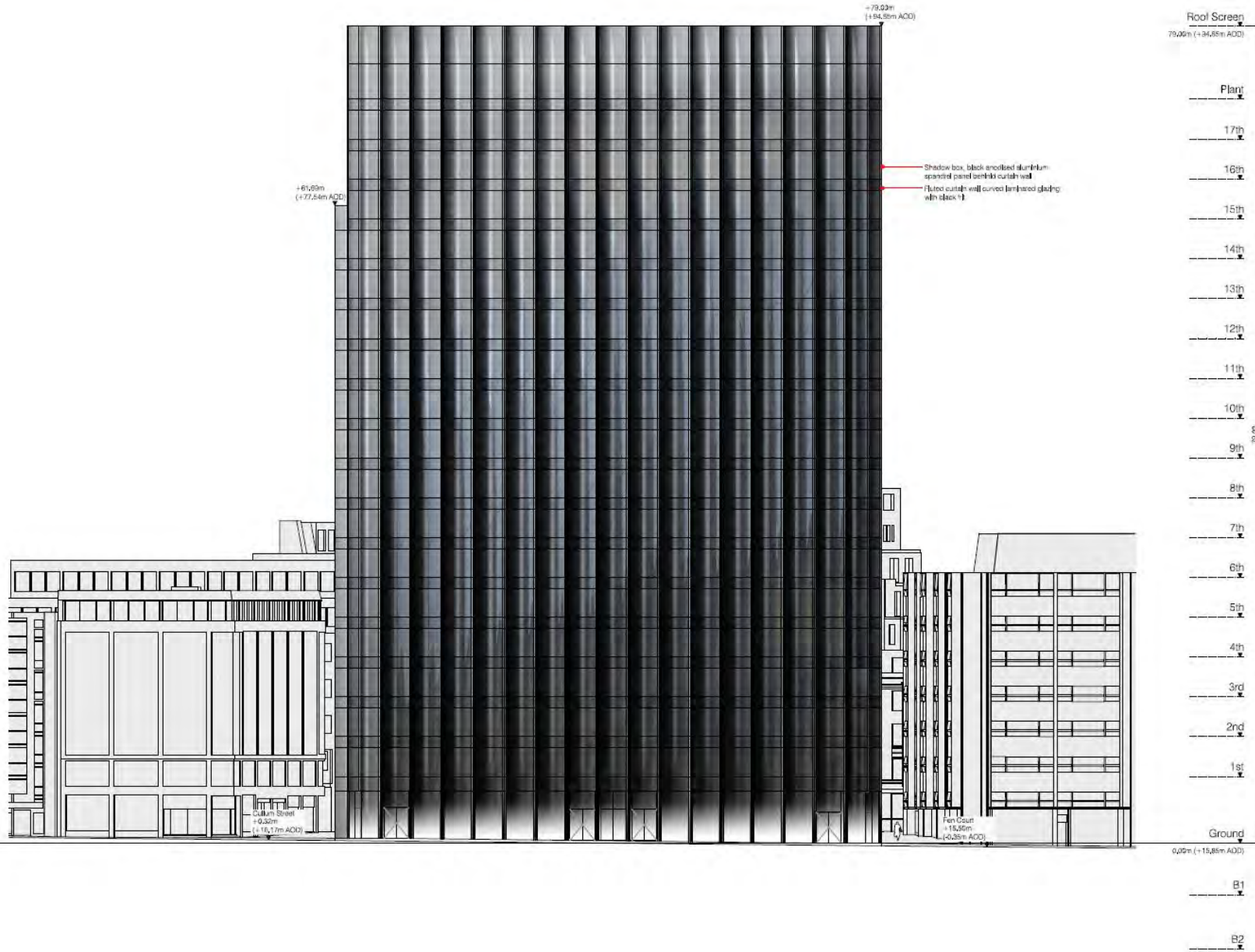
# 130 Fenchurch Street – Fountain House



Proposed roof plan

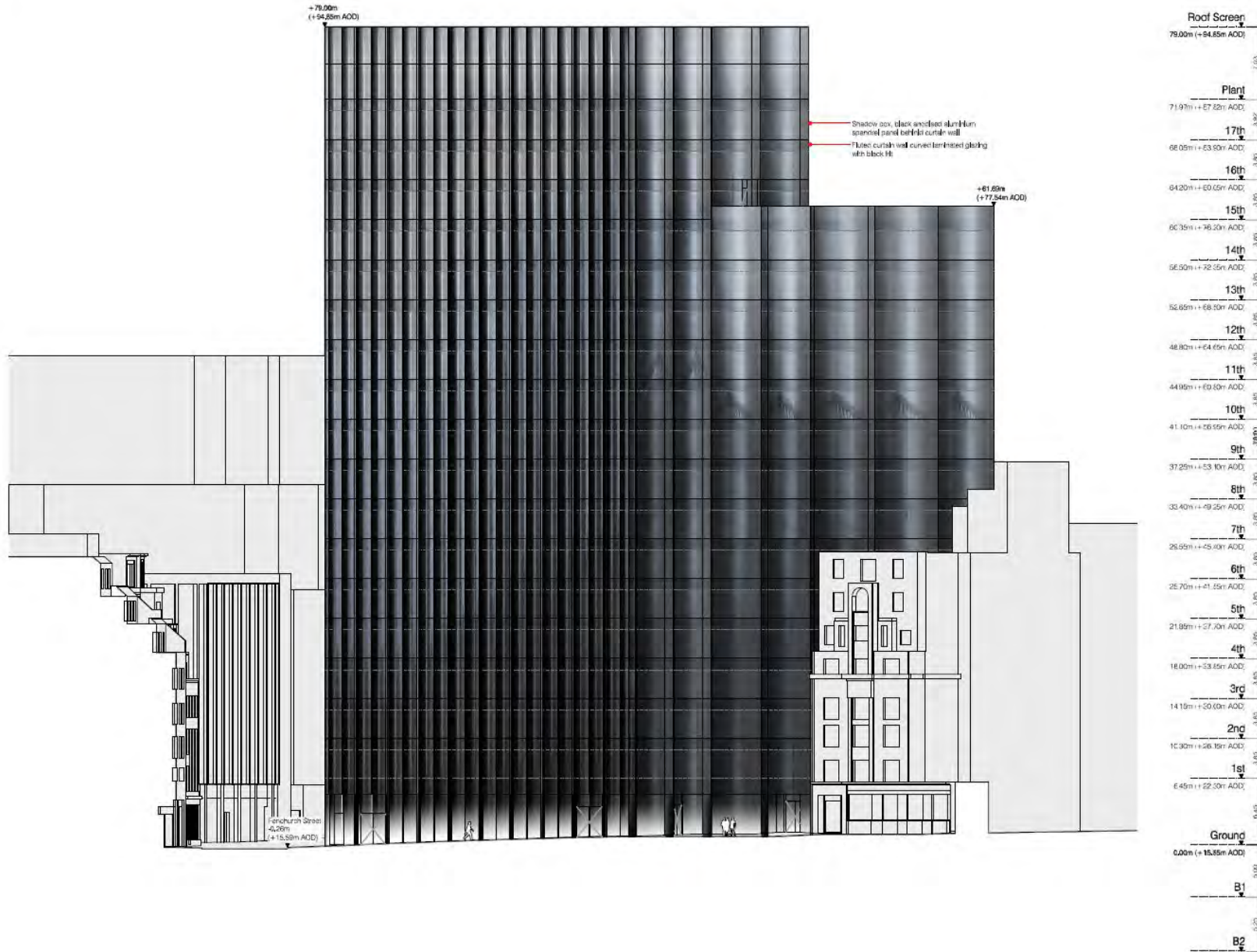


# 130 Fenchurch Street – Fountain House



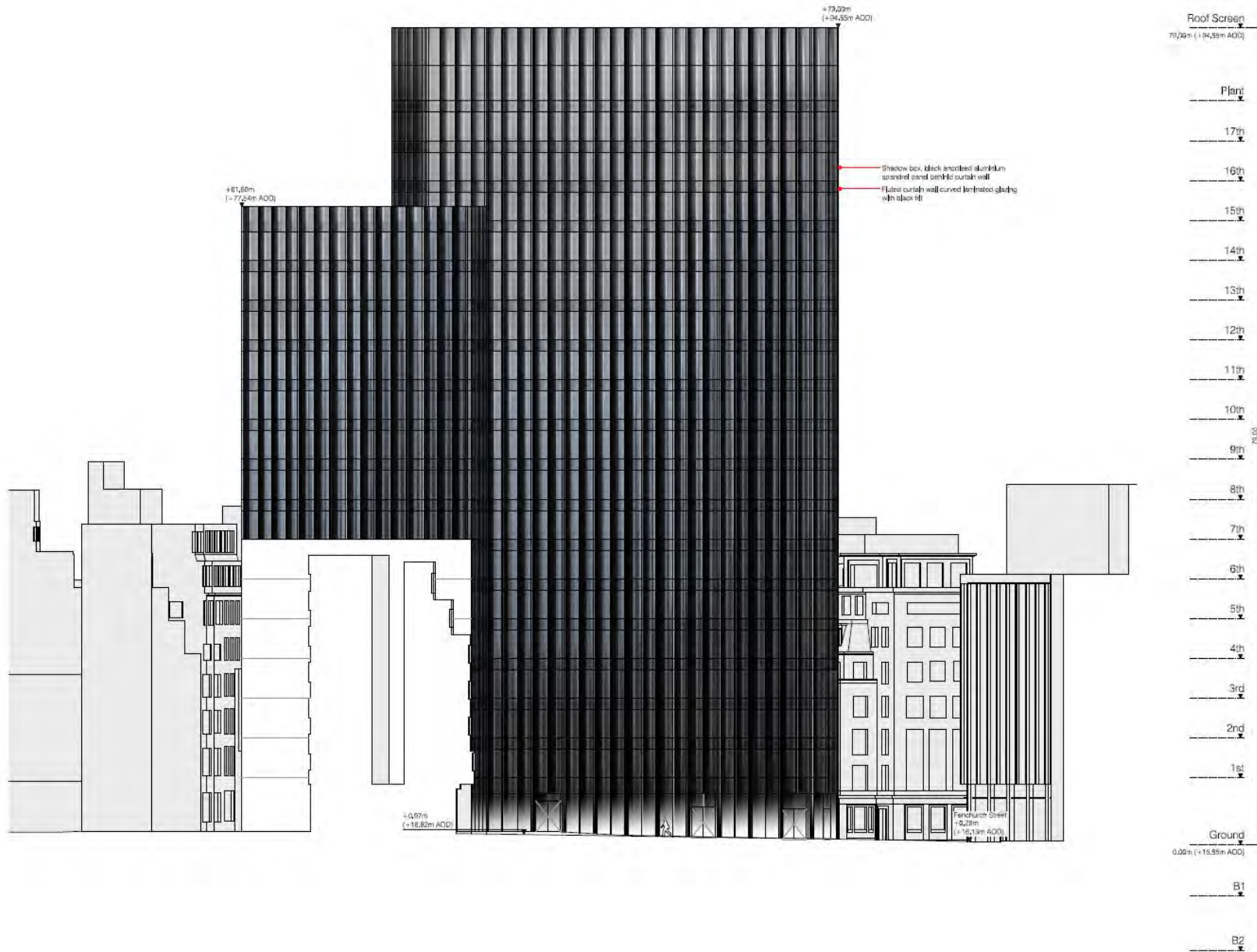
Proposed south elevation

# 130 Fenchurch Street – Fountain House



Proposed east elevation

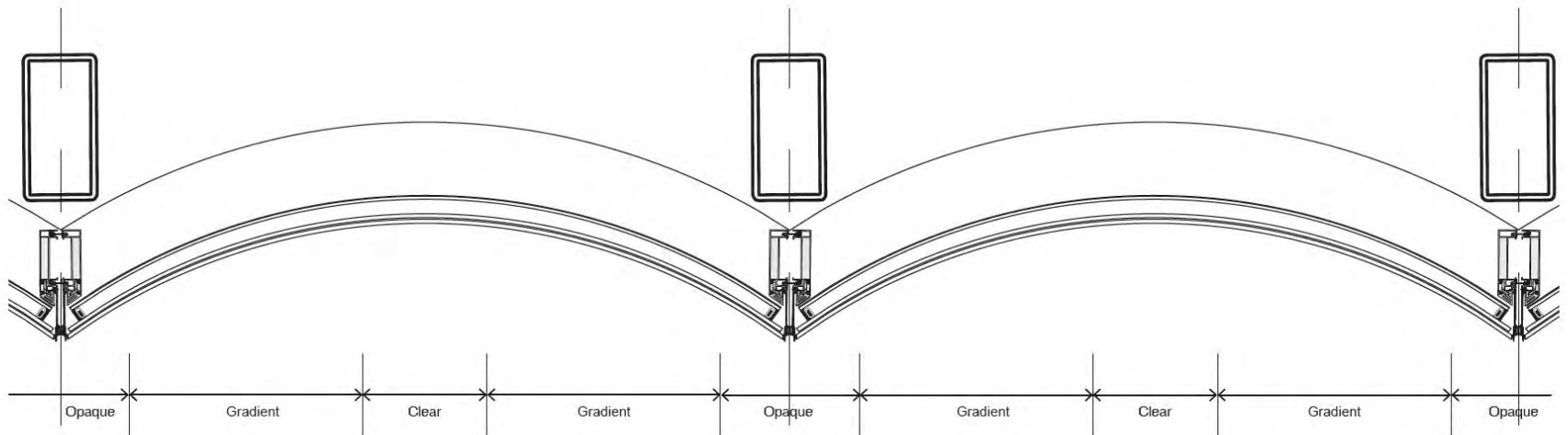
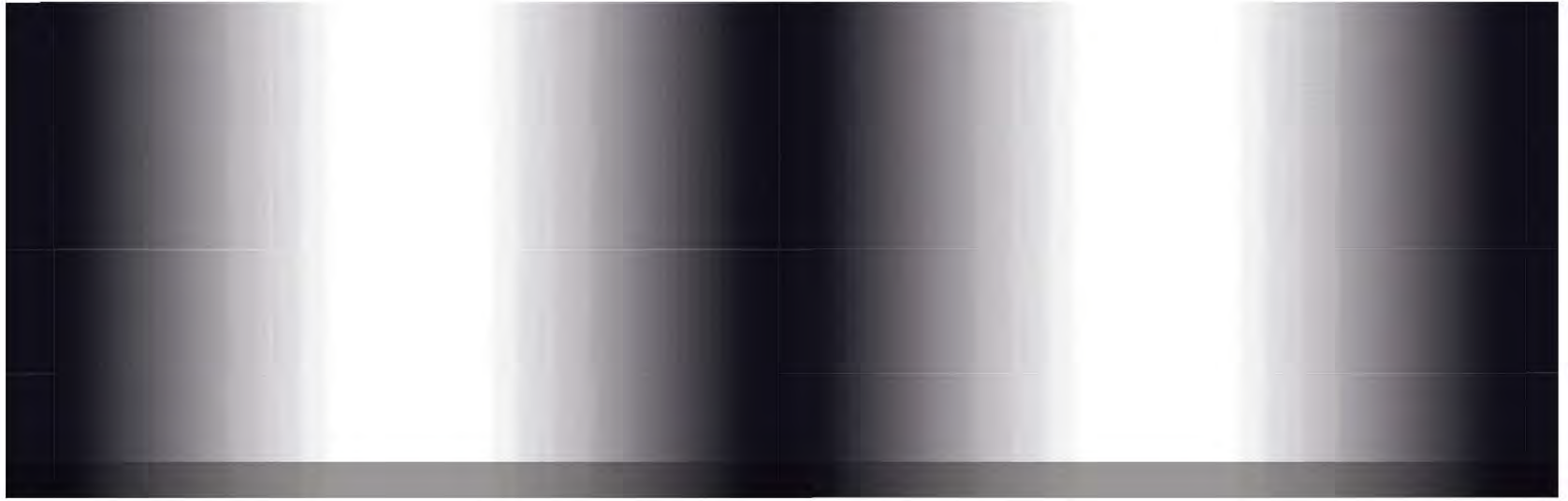
# 130 Fenchurch Street – Fountain House



Proposed west elevation

# 130 Fenchurch Street – Fountain House

130 Fenchurch Street



Façade details

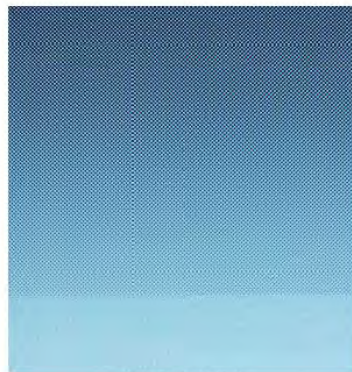
# 130 Fenchurch Street – Fountain House



View from interior 3m spacing fluted curtain wall- showing frit gradient effect



Frit gradient effect



Frit gradient effect



Visibility through frit

## Façade details

# 130 Fenchurch Street – Fountain House



Façade details

# 130 Fenchurch Street – Fountain House



Existing & proposed views – from Fenchurch Street (East India Arms)

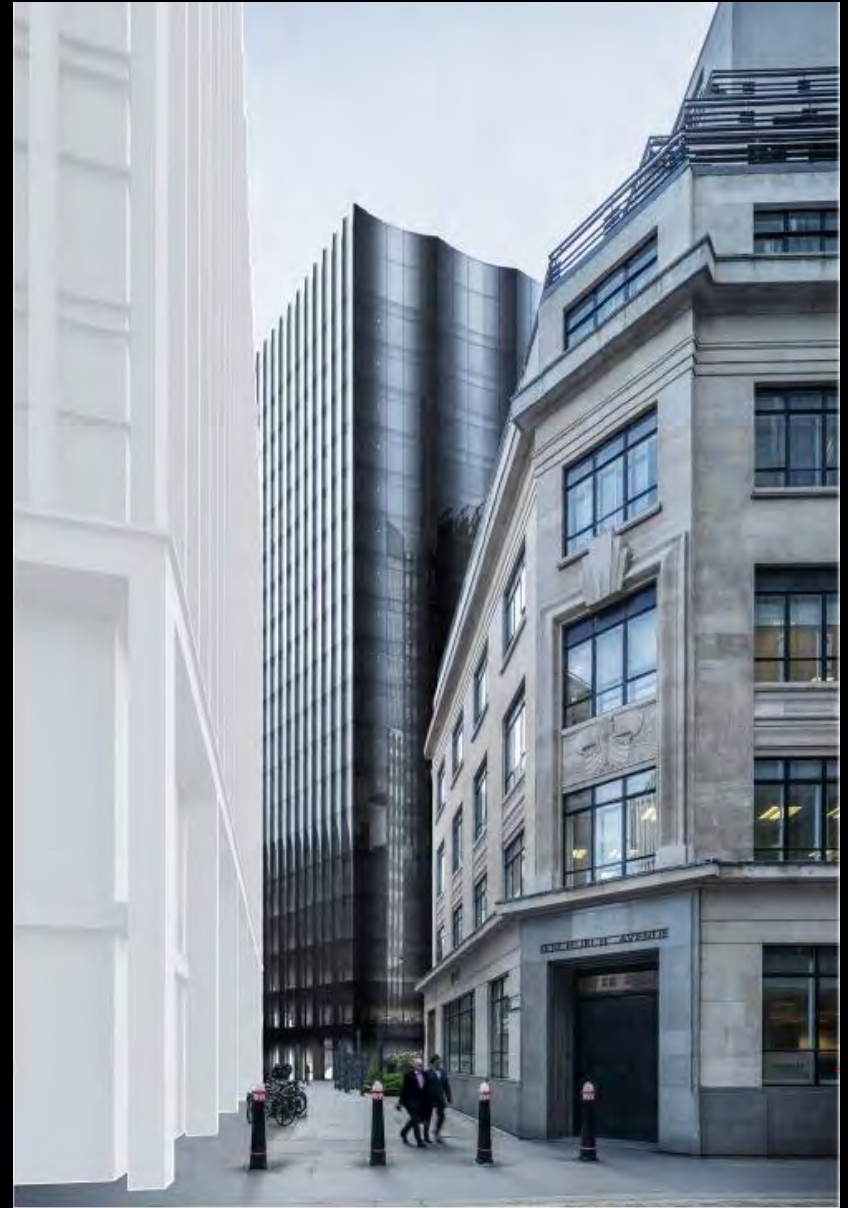
# 130 Fenchurch Street – Fountain House



Proposed views – from Fenchurch Street & corner of Rood Lane/Fenchurch Street



# 130 Fenchurch Street – Fountain House



Proposed views – from Cullum Street & Billiter Square

# 130 Fenchurch Street – Fountain House



Existing view – from City Hall, Queen's Walk

# 130 Fenchurch Street – Fountain House



Proposed view – from City Hall, Queen's Walk

# 130 Fenchurch Street – Fountain House



Existing view – from Waterloo Bridge

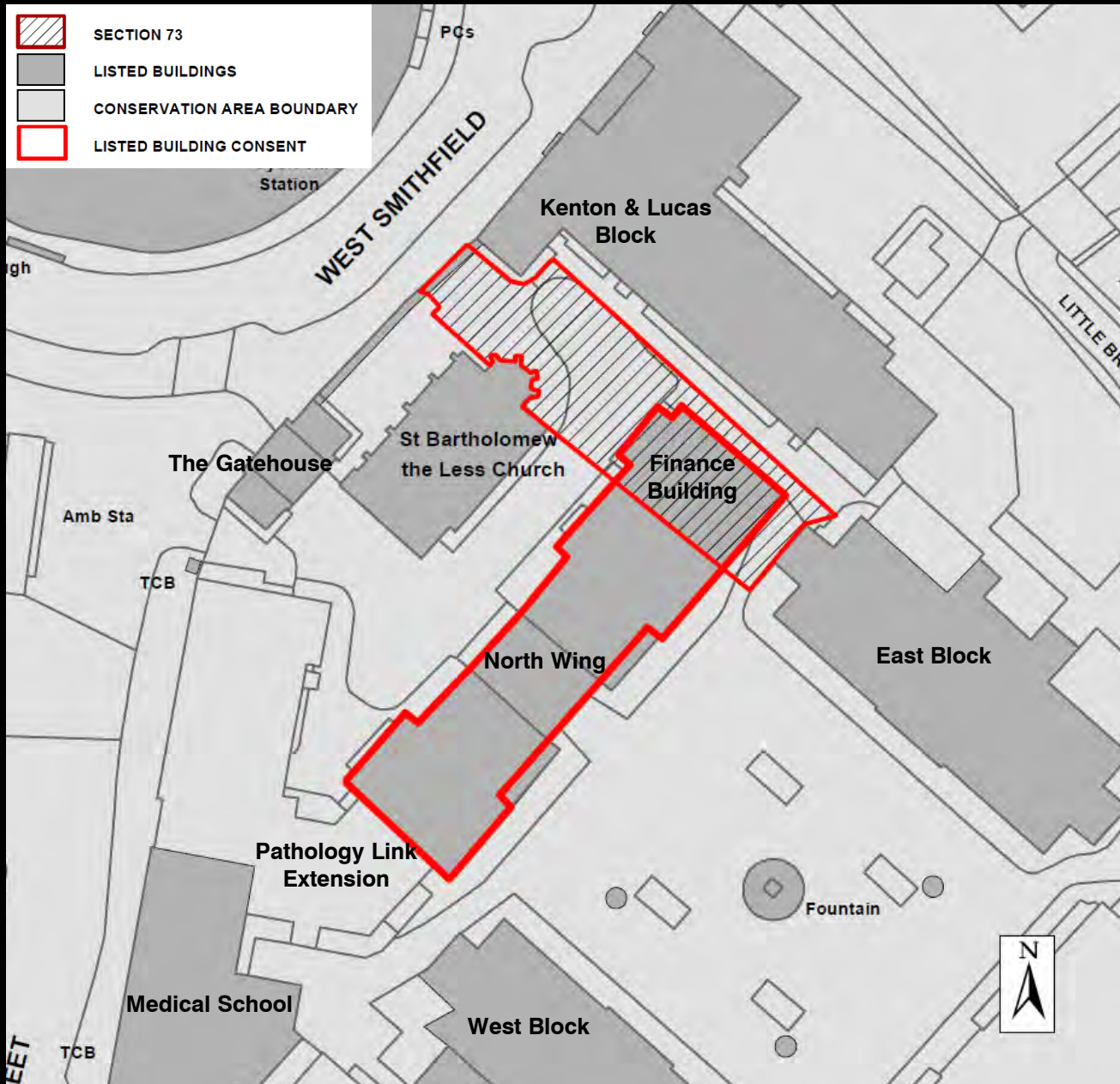
# 130 Fenchurch Street – Fountain House



Proposed view – from Waterloo Bridge

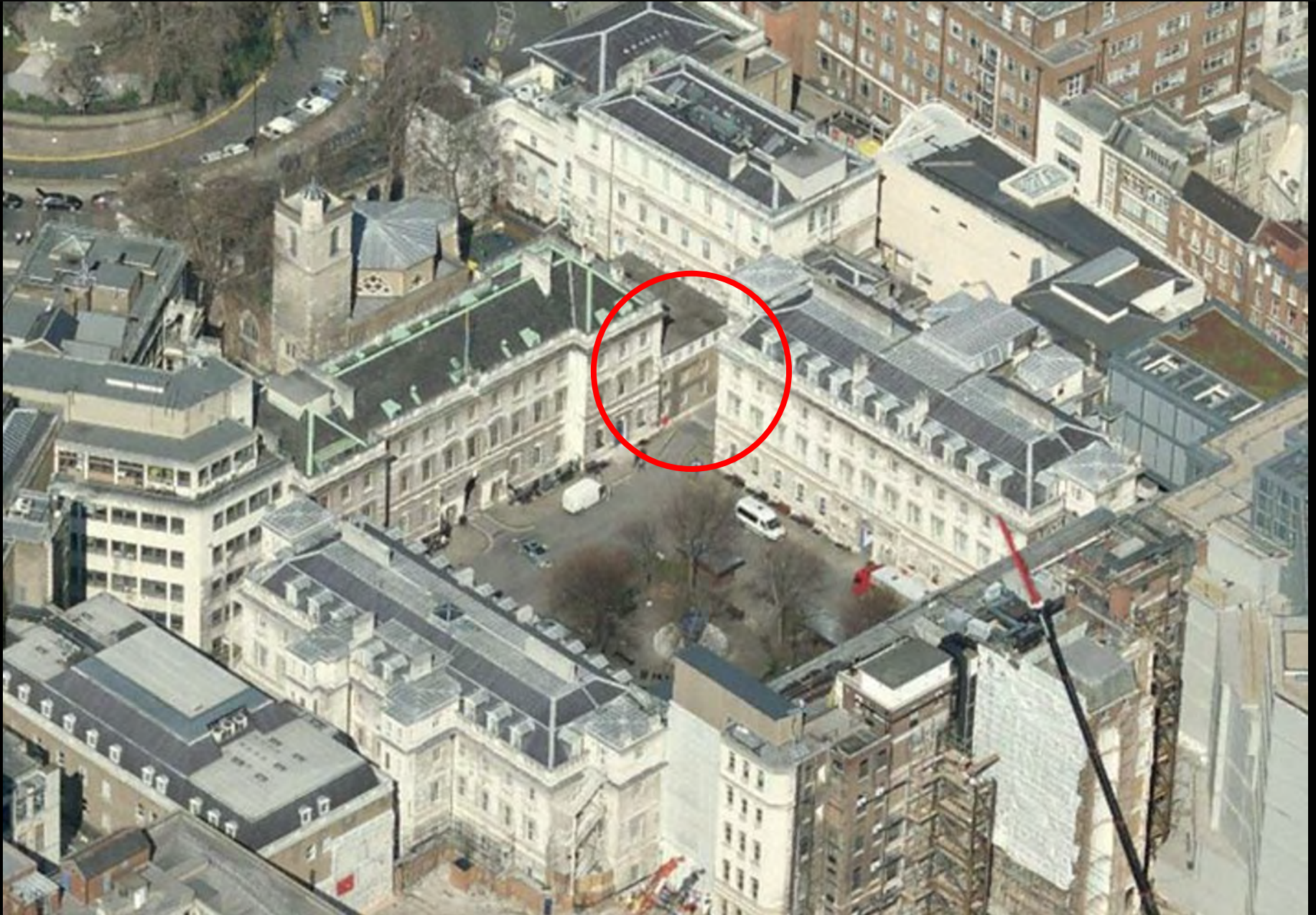


# St. Bartholomew's Hospital



Site location plan

# St. Bartholomew's Hospital



Aerial View



# St. Bartholomew's Hospital



The Finance Building

# St. Bartholomew's Hospital



The Finance Building

# St. Bartholomew's Hospital



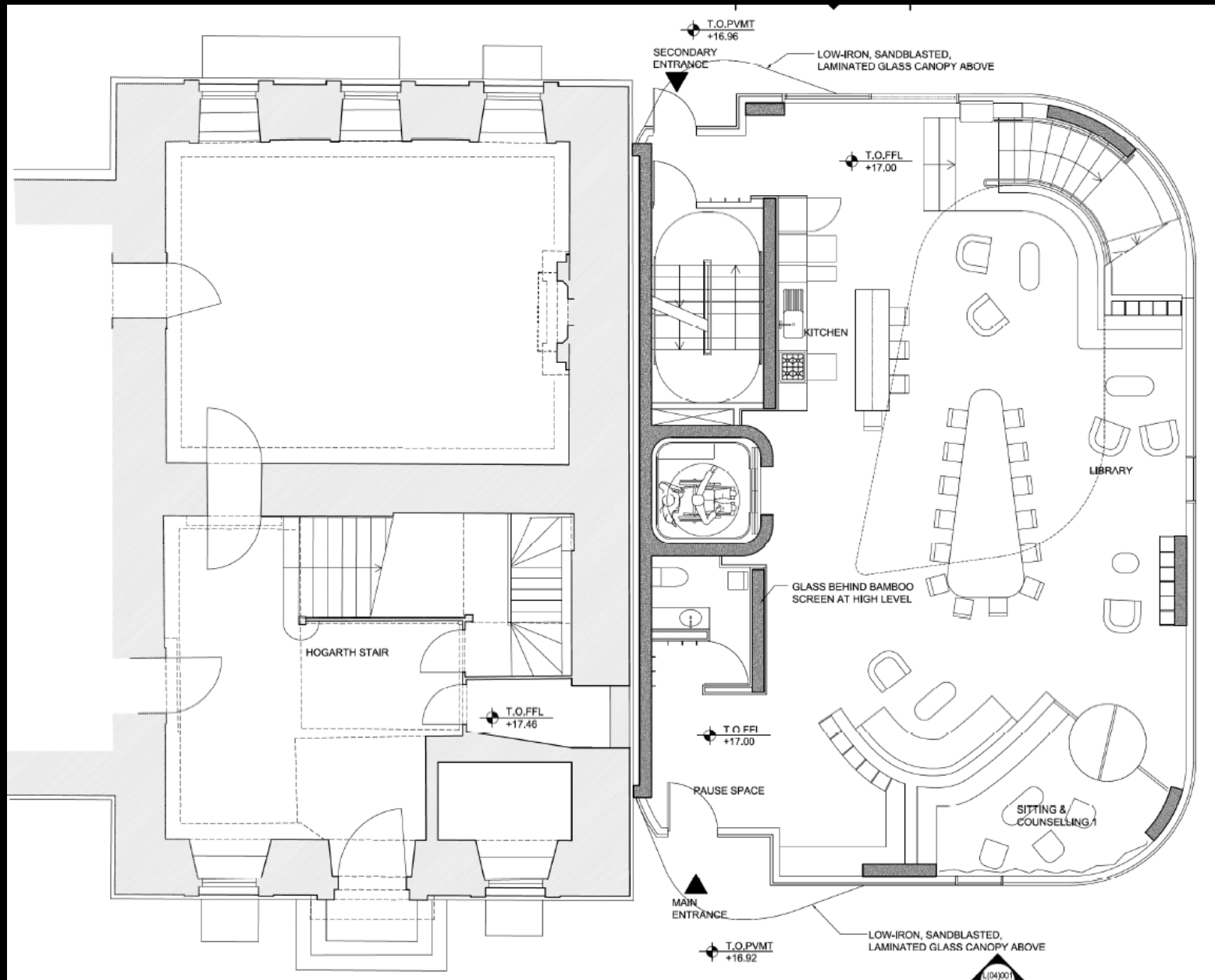
South east and north west elevations- Approved 17 July 2014 (Ref.14/00319/FULL & 14/00320/LBC)

# St. Bartholomew's Hospital



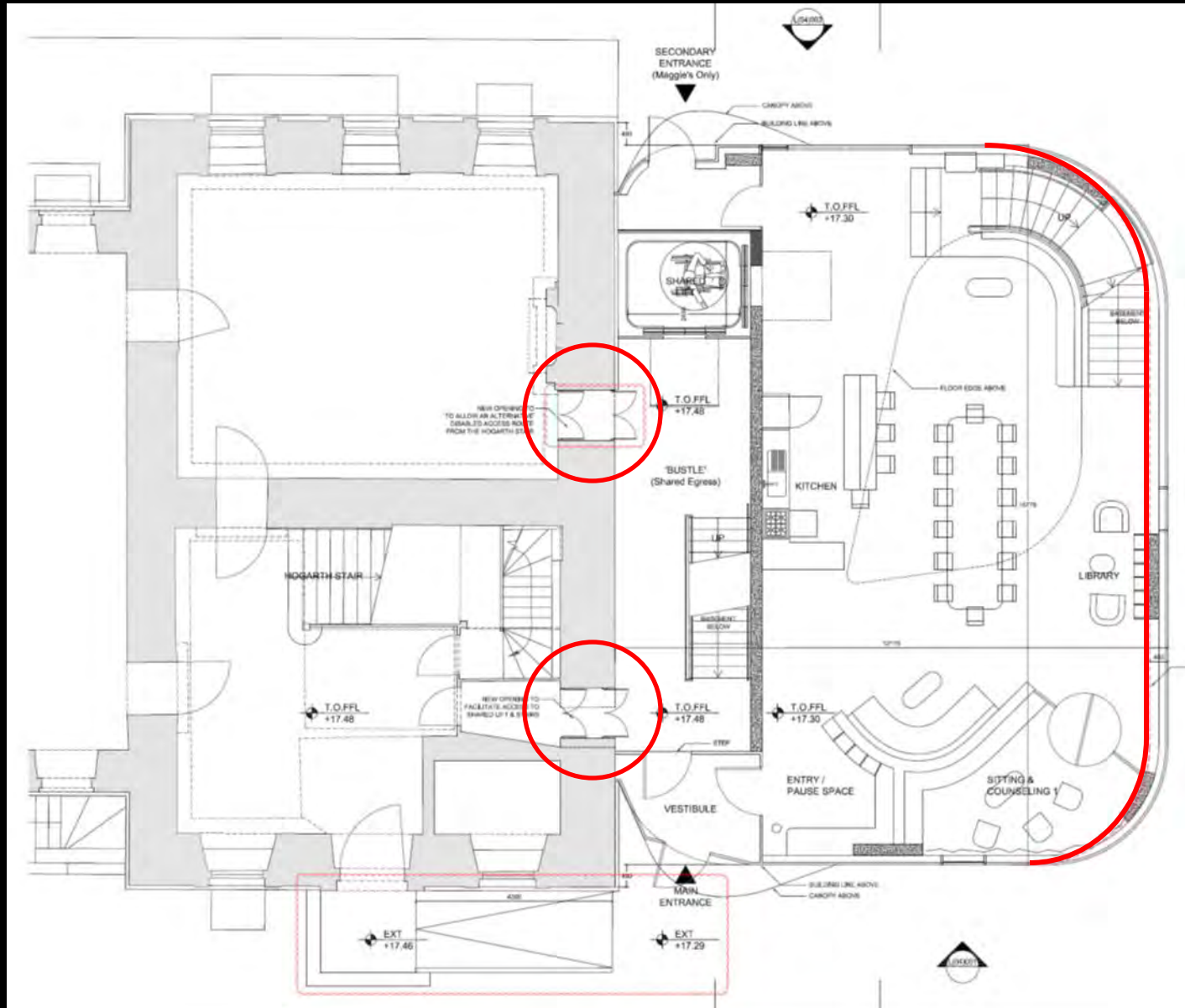
Proposed site plan - Approved 17 July 2014 (Ref.14/00319/FULL & 14/00320/LBC)

# St. Bartholomew's Hospital



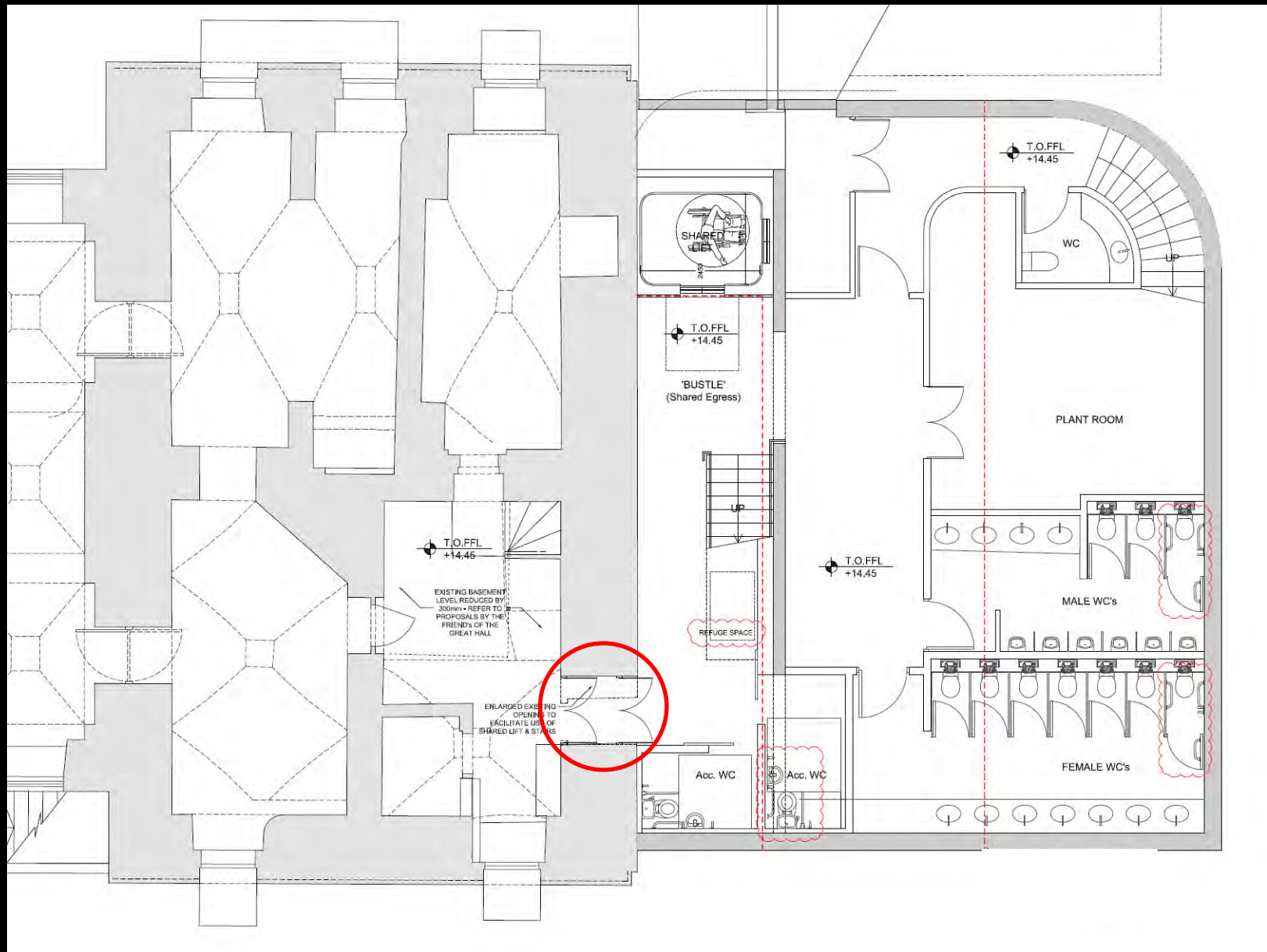
Ground floor plan - Approved 17 July 2014 (Ref.14/00319/FULL & 14/00320/LBC)

# St. Bartholomew's Hospital



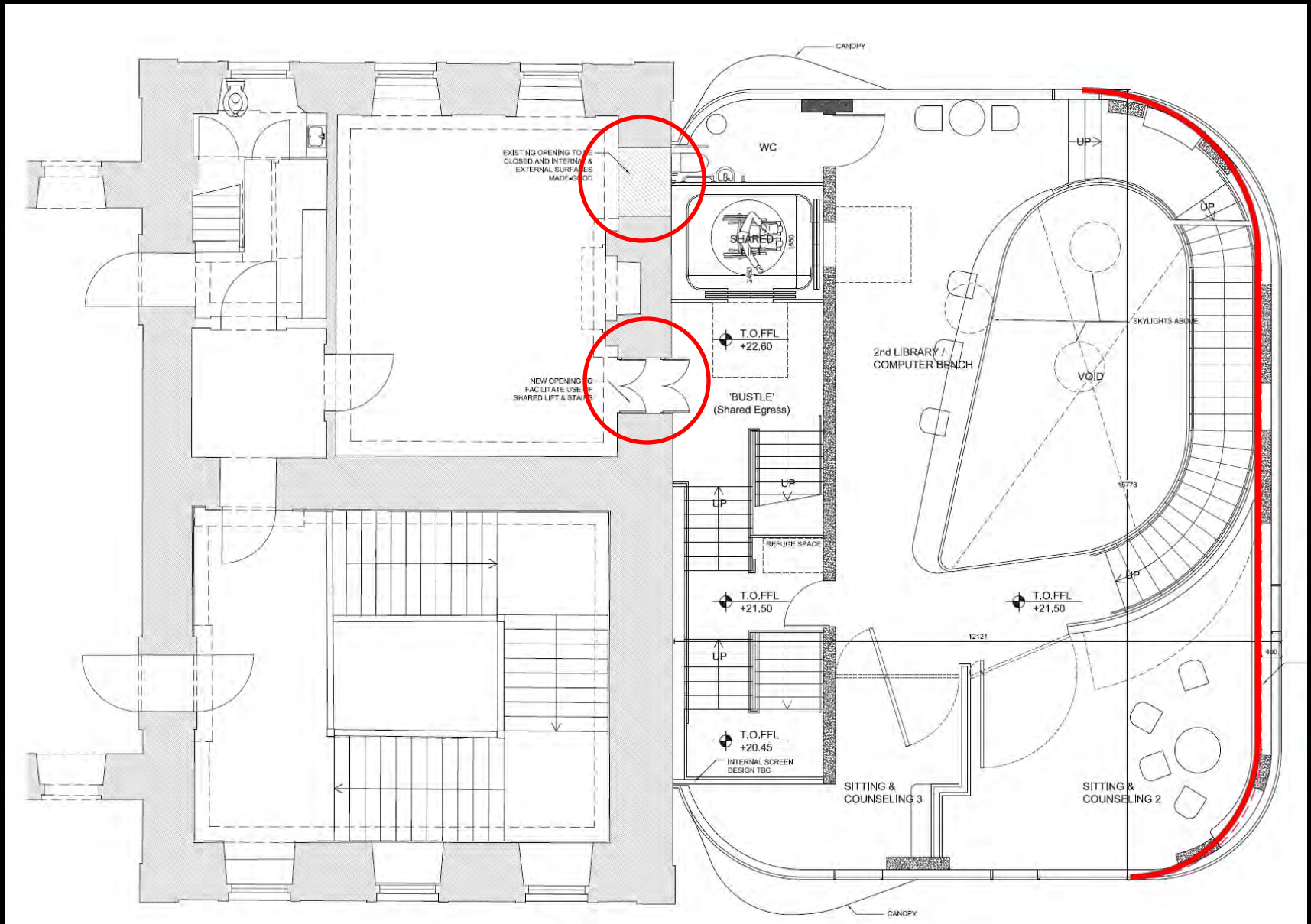
Proposed ground floor plan

# St. Bartholomew's Hospital



Proposed basement plan

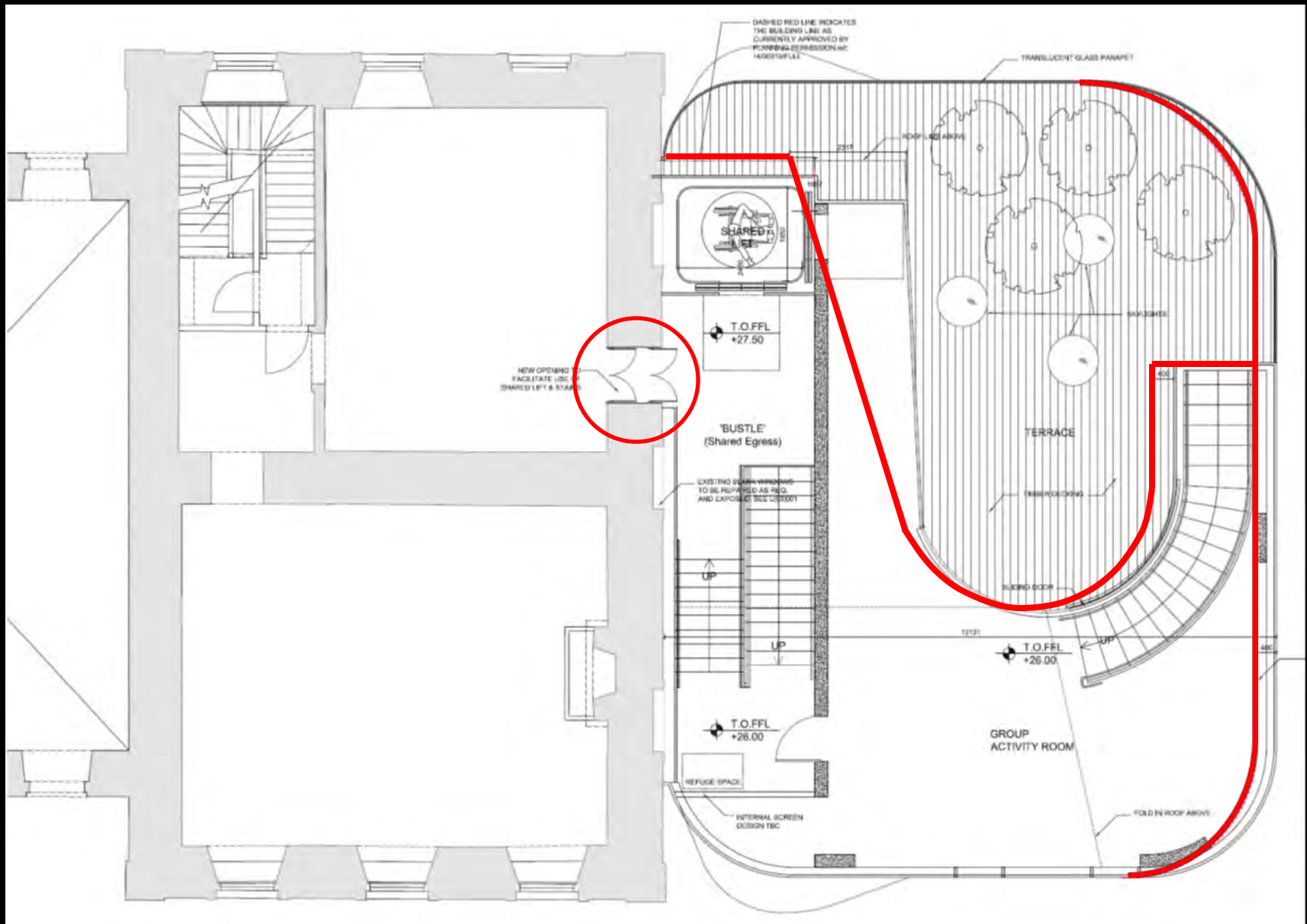
# St. Bartholomew's Hospital



Proposed first floor plan

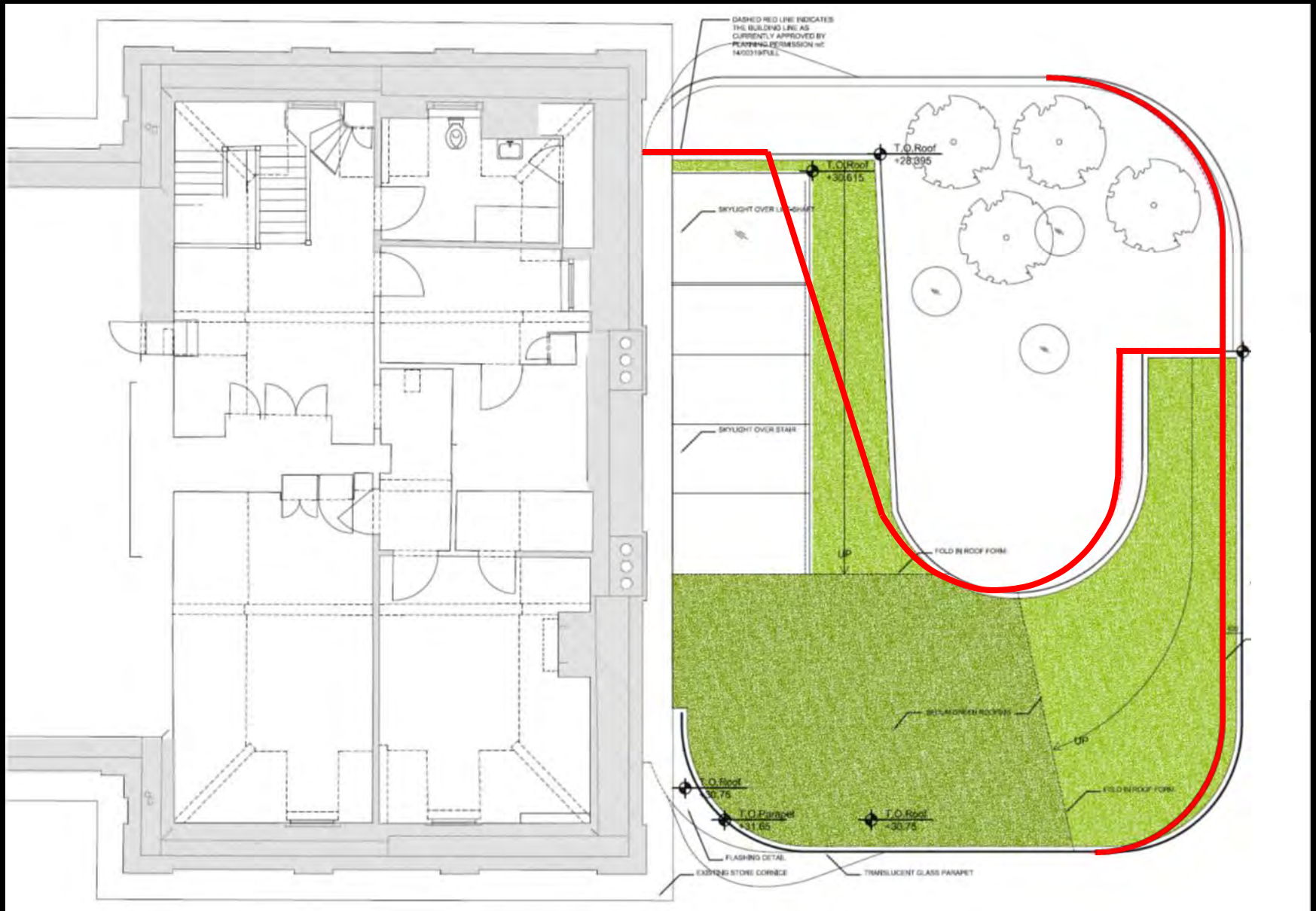


# St. Bartholomew's Hospital



Proposed second floor plan

# St. Bartholomew's Hospital



Proposed roof plan

# St. Bartholomew's Hospital



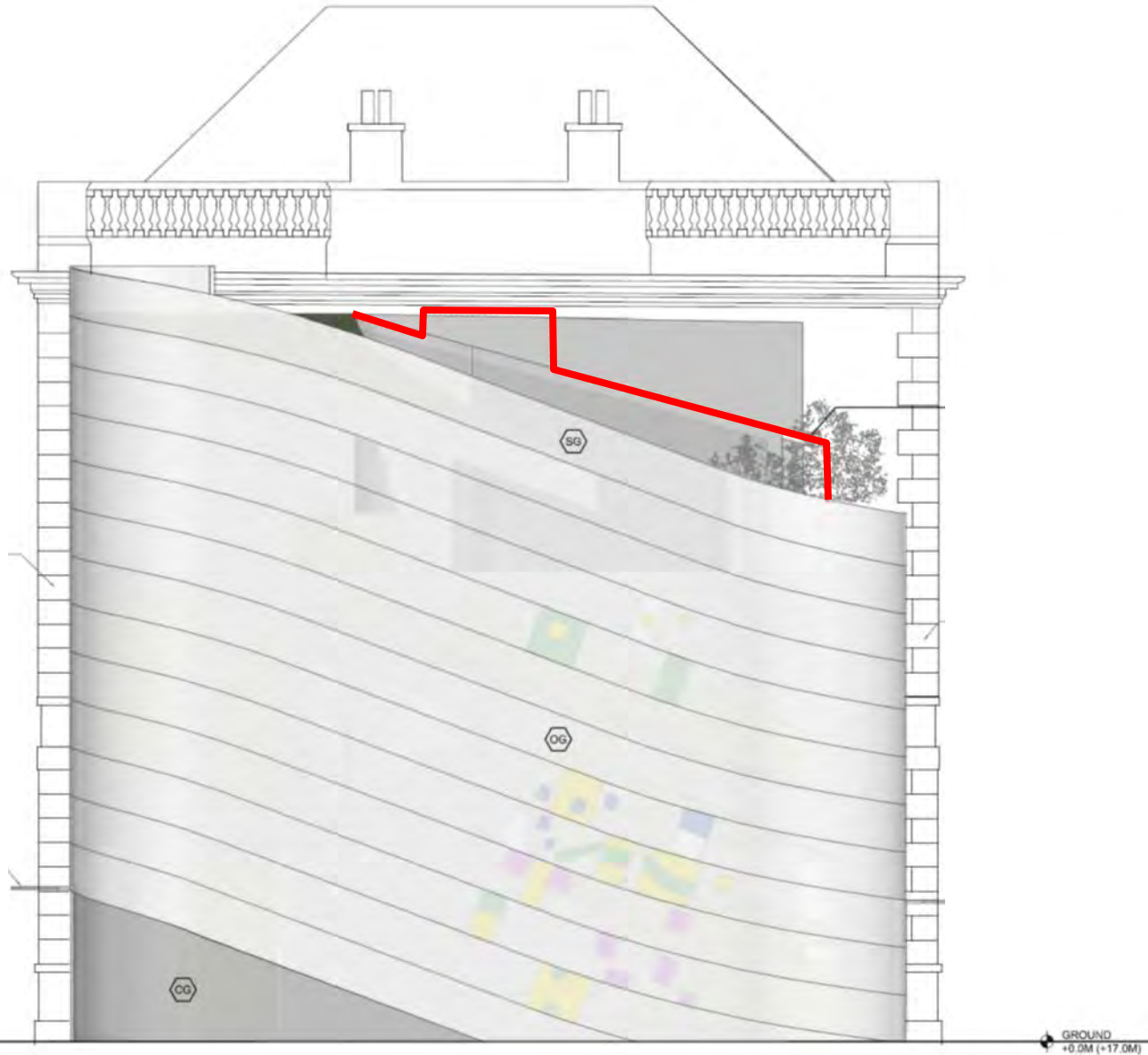
Proposed south east elevation

# St. Bartholomew's Hospital



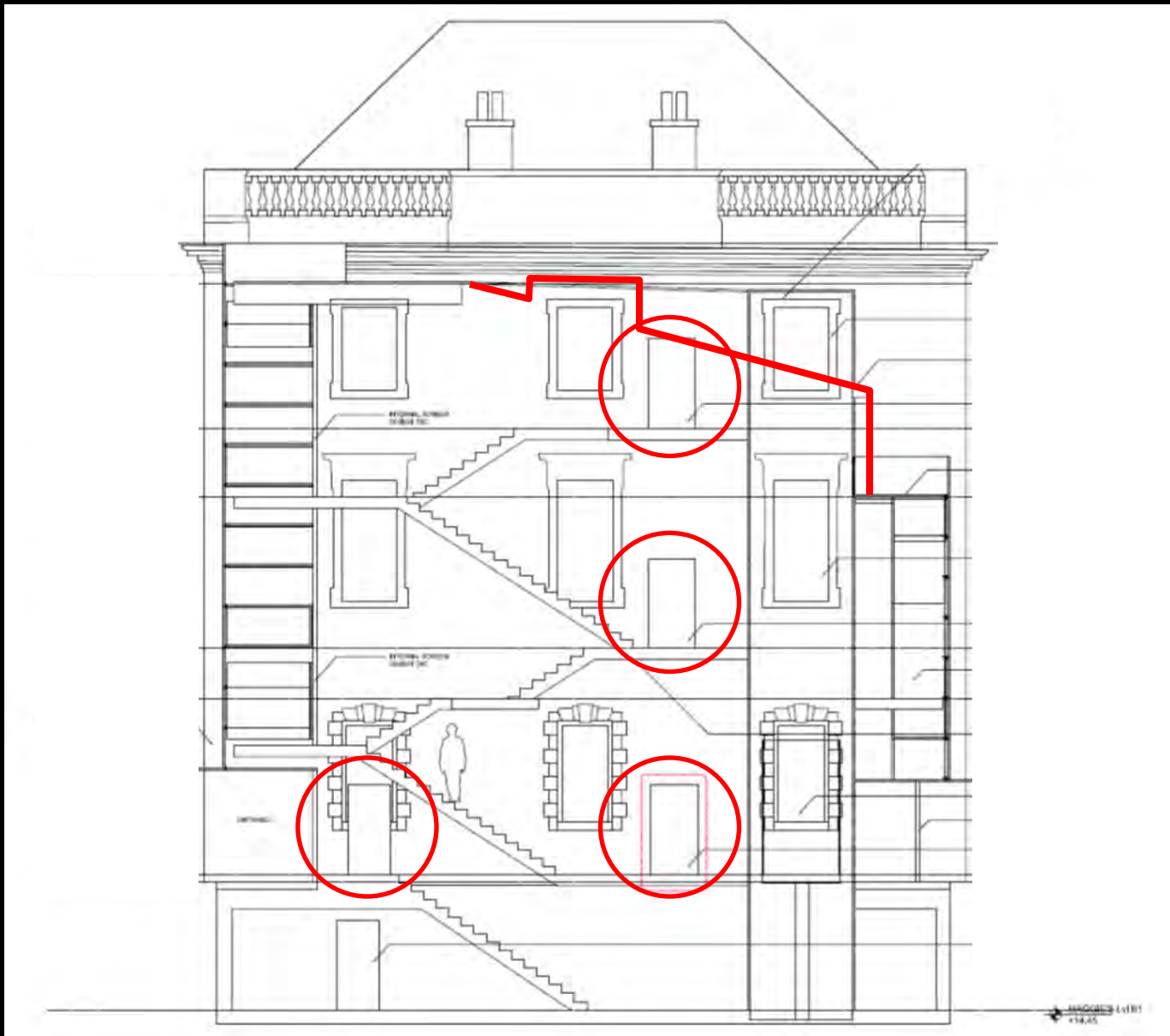
Proposed north west elevation

# St. Bartholomew's Hospital



Proposed north east elevation

# St. Bartholomew's Hospital



Proposed section A-A

# St. Bartholomew's Hospital



Proposed view from St. Bartholomew's Square

# St. Bartholomew's Hospital



Proposed view from the Chapel Garden



# St. Bartholomew's Hospital



Proposed view from courtyard arch



# Planning & Transportation Next Committee

17<sup>th</sup> March 2015